

SUZUKI

GV1400

CORNERING LAMP SET

INSTALLATION MANUAL

NOTE:

If you intend to install the Adjustable Air Vent Fairing with the Cornering Lamp Set, read both sets of installation instructions completely before starting any installation.

Some installation steps can be combined for both these accessories.

WARNING:

The installation of this accessory set is complicated. If you are not sure that you can properly install this accessory, we strongly urge you to ask your authorized Suzuki dealer to do the work for you.

CONTENTS

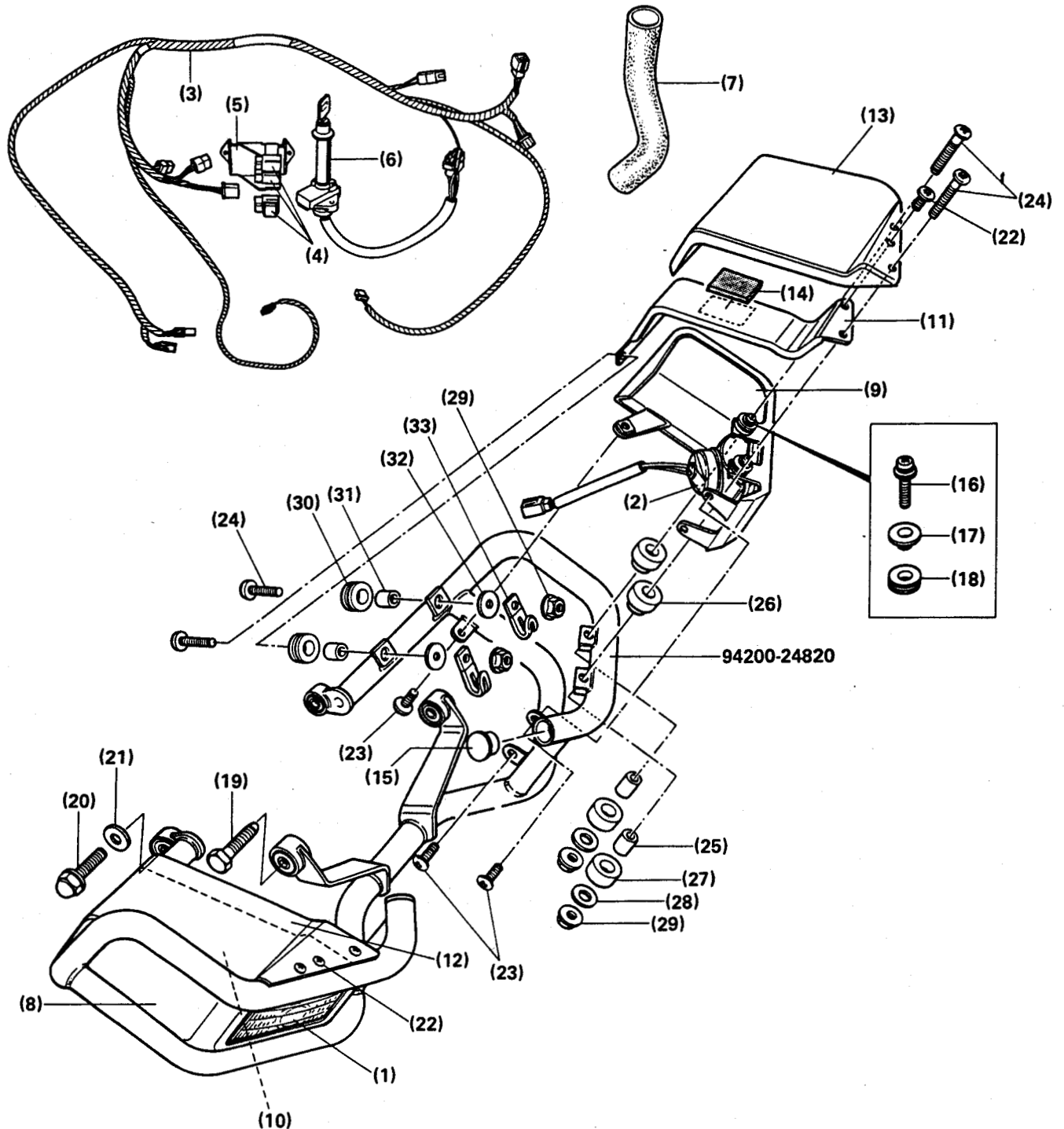
COMPONENT PARTS	1
MOUNTING PROCEDURES	3

COMPONENT PARTS

This cornering lamp set consists of the parts shown below.
Please check that all parts shown in the illustration below are included before installation.

NOTE:

This cornering lamp set is designed to be installed only with the engine case guard (P/No. 94200-24820).



COMPONENT PARTS

No.	Description	Q'ty	Remarks
(1)	Cornering lamp assembly, RH	1	
(2)	Cornering lamp assembly, LH	1	
(3)	Wiring harness	1	
(4)	Relay	3	
(5)	Relay bracket	1	
(6)	Ignition switch assembly	1	
(7)	Radiator hose	1	
(8)	Cornering lamp cover, lower, RH	1	
(9)	Cornering lamp cover, lower, LH	1	
(10)	Cornering lamp cover, center, RH	1	
(11)	Cornering lamp cover, center, LH	1	
(12)	Cornering lamp cover, upper, RH	1	
(13)	Cornering lamp cover, upper, LH	1	
(14)	Cushion, lamp cover, center	2	
(15)	Cap	2	
(16)	Screw, cornering lamp	6	4x20mm with lock washer and flat washer
(17)	Spacer, cornering lamp	6	
(18)	Cushion, cornering lamp	6	
(19)	Bolt, engine case guard, upper	2	8x35mm Pointed bolt
(20)	Bolt, engine case guard, lower	2	8x35mm Crown bolt with washer
(21)	Washer, engine case guard, lower	2	φ 8mm Flat washer
(22)	Screw, lamp cover, No. 1	2	5x8mm Truss screw
(23)	Screw, lamp cover, No. 2	6	5x10mm Truss screw
(24)	Screw, lamp cover, No. 3	8	5x20mm Truss screw
(25)	Spacer, lamp cover, upper	4	5.2x8x10mm
(26)	Upper cushion, lamp cover, upper	4	
(27)	Lower cushion, lamp cover, upper	4	
(28)	Washer, lamp cover, upper	4	5.5x14x1.2mm
(29)	Nut, lamp cover	8	
(30)	Cushion, lamp cover, lower	4	
(31)	Spacer, lamp cover, lower	4	6.1x9x7.5mm
(32)	Washer, lamp cover, lower	4	5.5x20x1.2mm
(33)	Clamp	4	

MOUNTING PROCEDURES

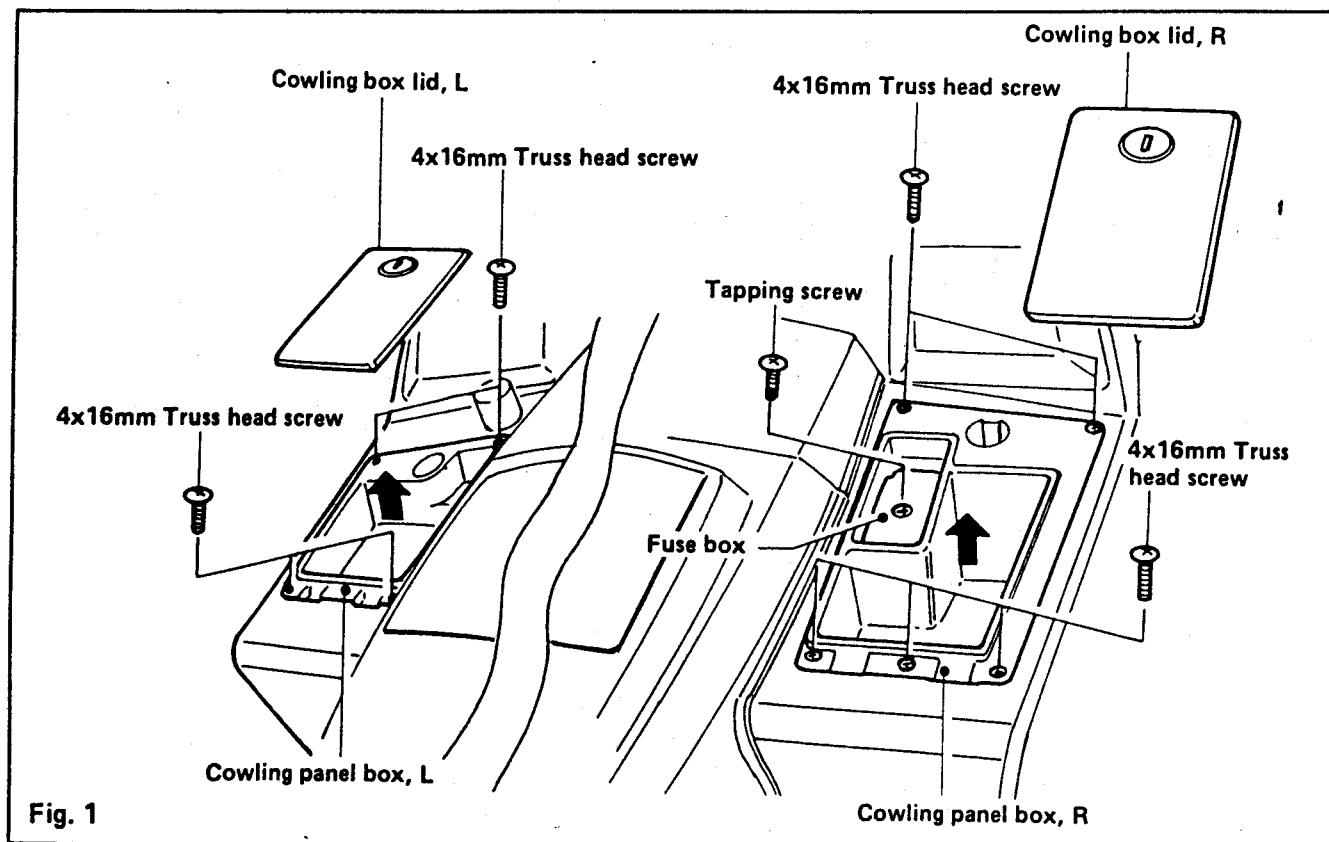
1. Detach the right and left cowling box lids with the ignition key. Remove the right and left cowling panel boxes by removing the screws as shown in Fig. 1.

Right side: 6-4x16mm truss head screw

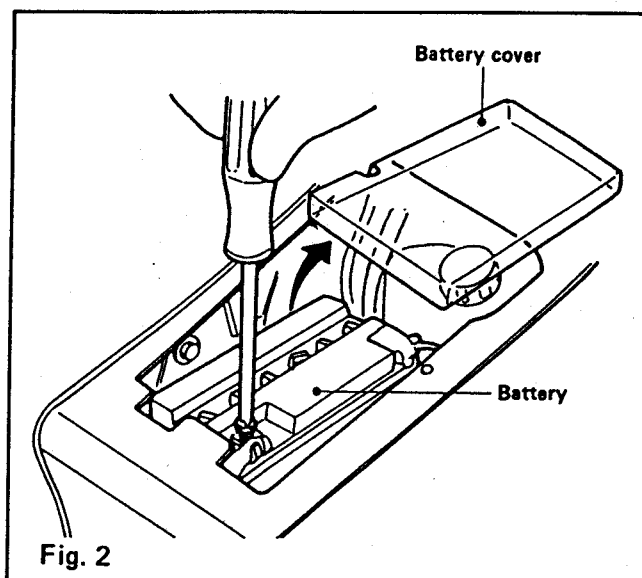
Left side: 4-4x16mm truss head screw

NOTE:

Remove the fuse box on the right side at this time. Remove the tapping screw to take off the white cover. Take out the fuse box by unfastening the claw at the back of the fuse box.



2. Detach the battery cover under the right cowling panel box. Disconnect the negative (-) cable from the negative (-) terminal of the battery.



MOUNTING PROCEDURES

3. Removing the seat and frame cover.

- 1) Remove the right and left saddle bag lids.
- 2) Remove the 8x25mm bolts at both sides used to secure the seat to the frame.
- 3) Raise the seat end with both hands and un-snap the 2 snaps on each side. Disconnect

the rubber hose at the back of the seat.

- 4) Remove the 6x10mm truss head screws that attaches the under-cover comp. on each side.
- 5) Unsnap the frame cover component from the body by pulling it with both hands.

LEFT SIDE SHOWN

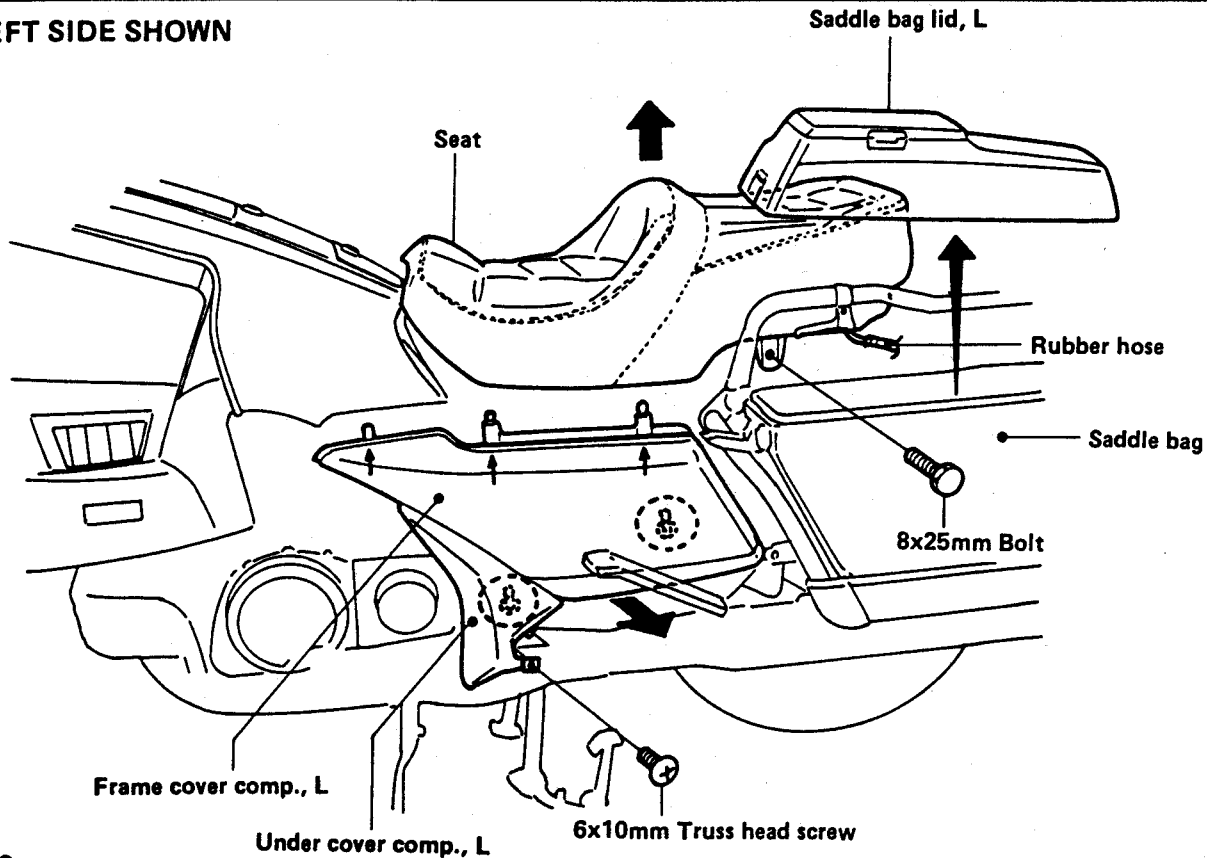


Fig. 3

4. Detaching the handle cover.

- 1) Take off the lid with a standard-tip screwdriver. Remove the 2 screws inside.
- 2) Remove the cap of the ignition key hole by turning it counter-clockwise and lifting it up.
- 3) Disconnect the 4P coupler.
- 4) Remove the rubber frame head cover seal.

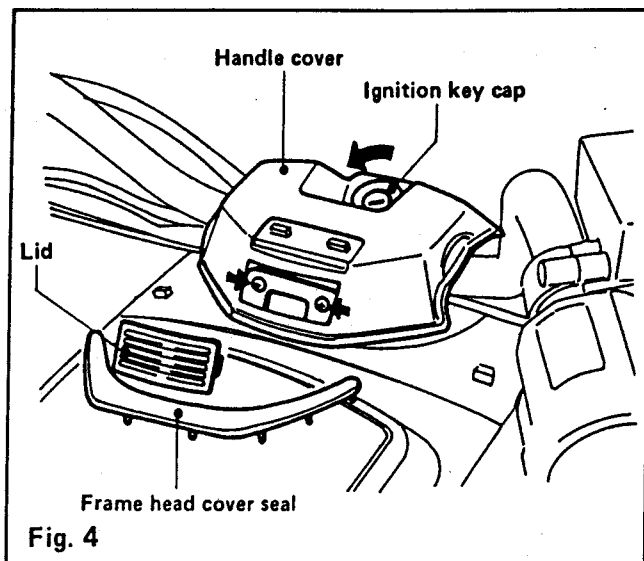
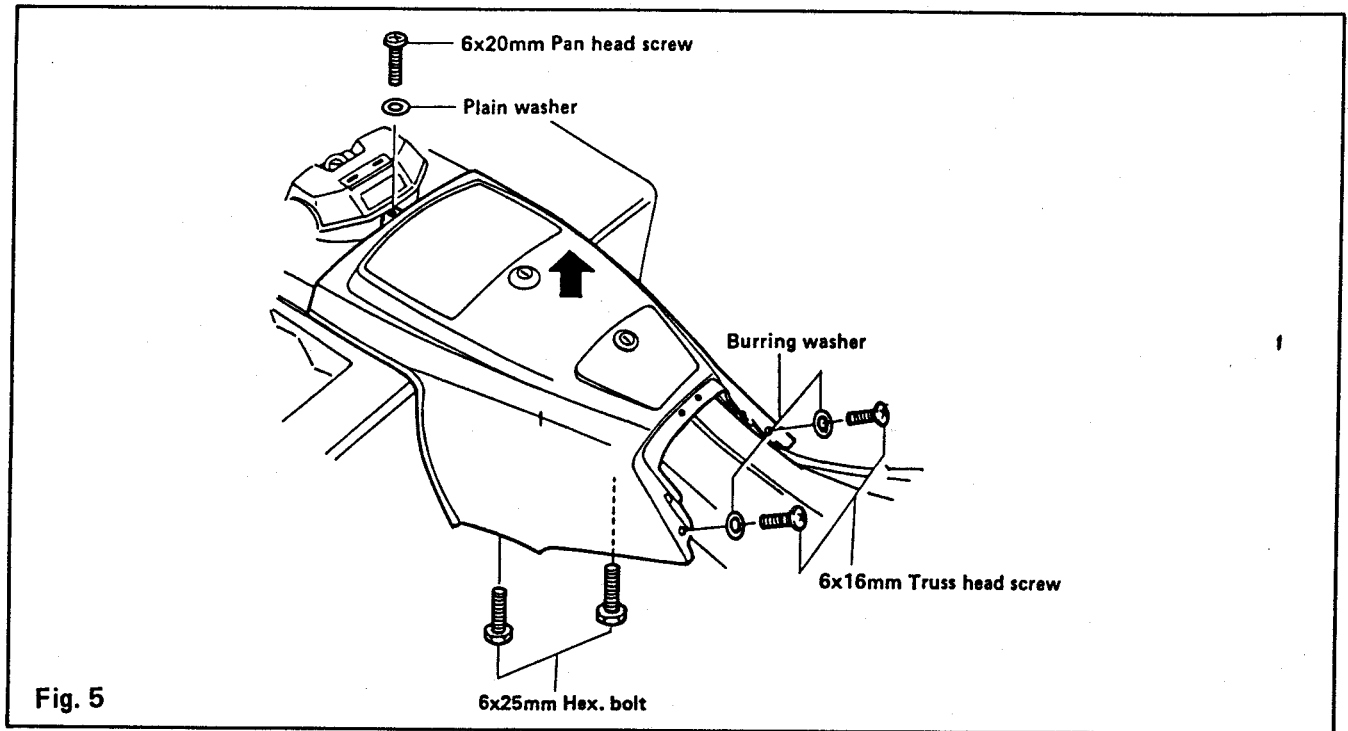


Fig. 4

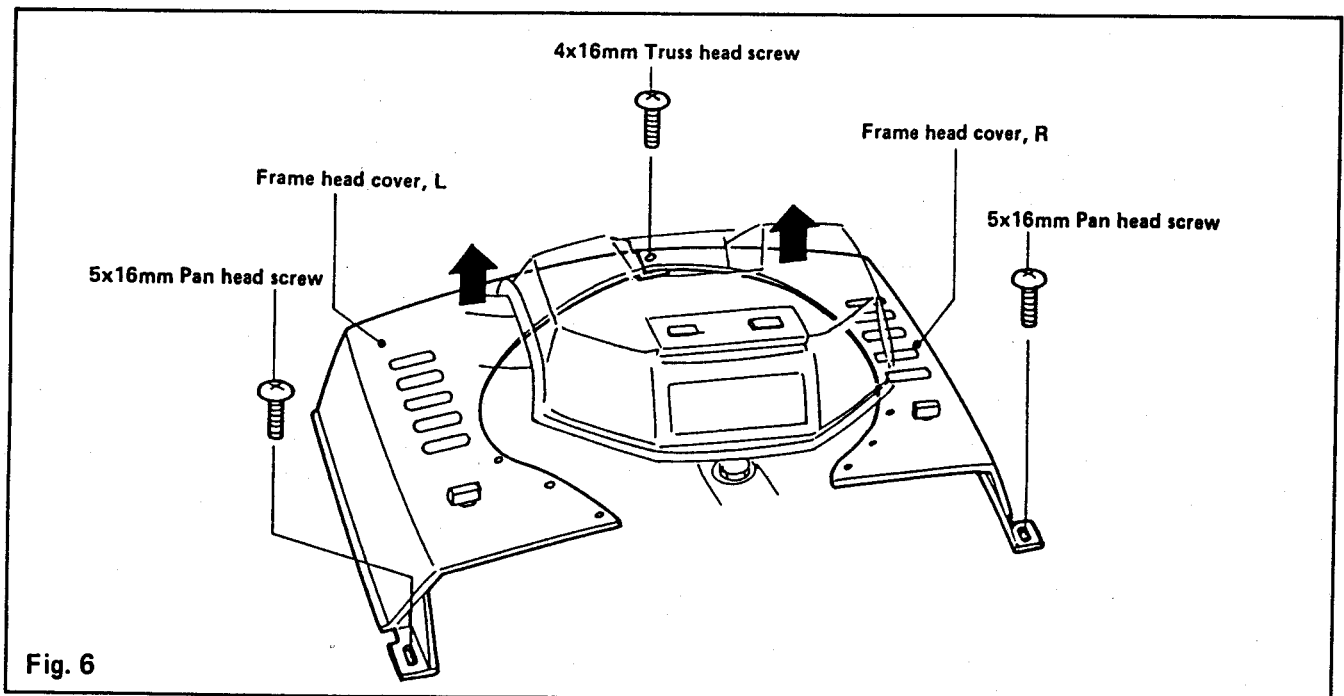
MOUNTING PROCEDURES

5. Detaching the upper frame cover.

Remove the three screws and two bolts as shown in Fig. 5.



6. Detach the right and left frame head covers by removing the three screws as shown in Fig. 6.



MOUNTING PROCEDURES

7. Detaching the right & left and central front cowling covers.

- 1) Remove the "Cavalcade" emblem on the headlight by removing the 2-3x12mm screws.
- 2) Remove the screw caps attached to the right and left front cowling covers by turning them counter-clockwise with the

special tool (fairing screw cap wrench) included in the motorcycle tool kit and detach the front cowling covers by removing the 6x20mm pan head screws fitted inside.

- 3) Take off the front cowling center cover by removing the four screws as shown in Fig. 7.

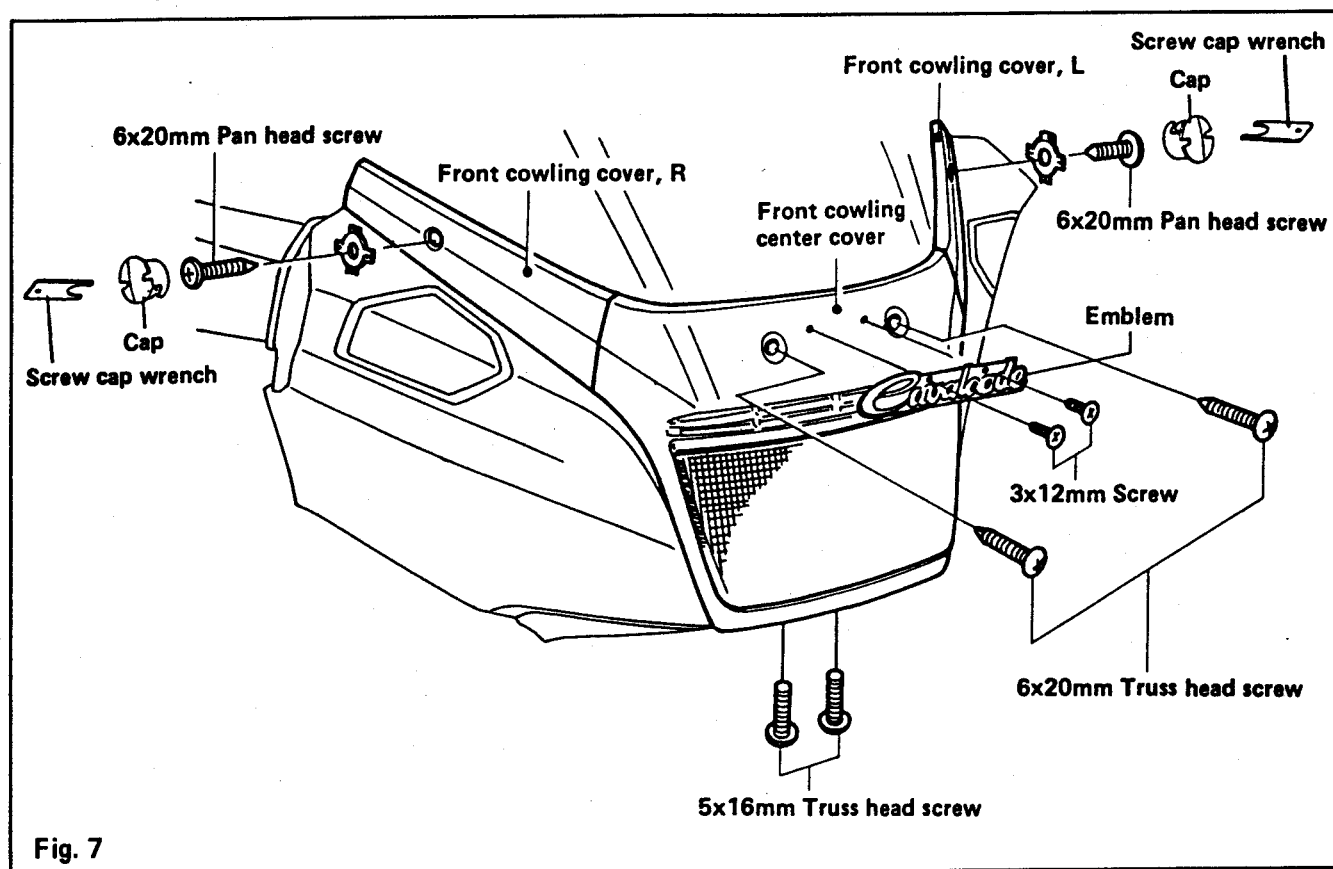


Fig. 7

8. Detach the windshield by removing the 2-6x16mm truss head screws as shown in Fig. 8.

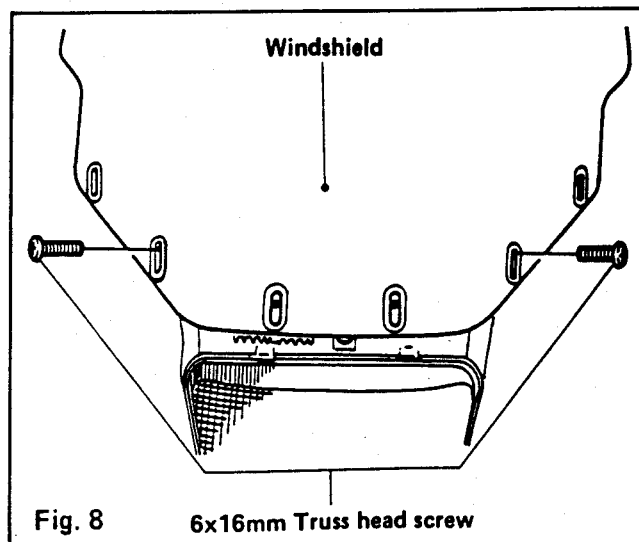
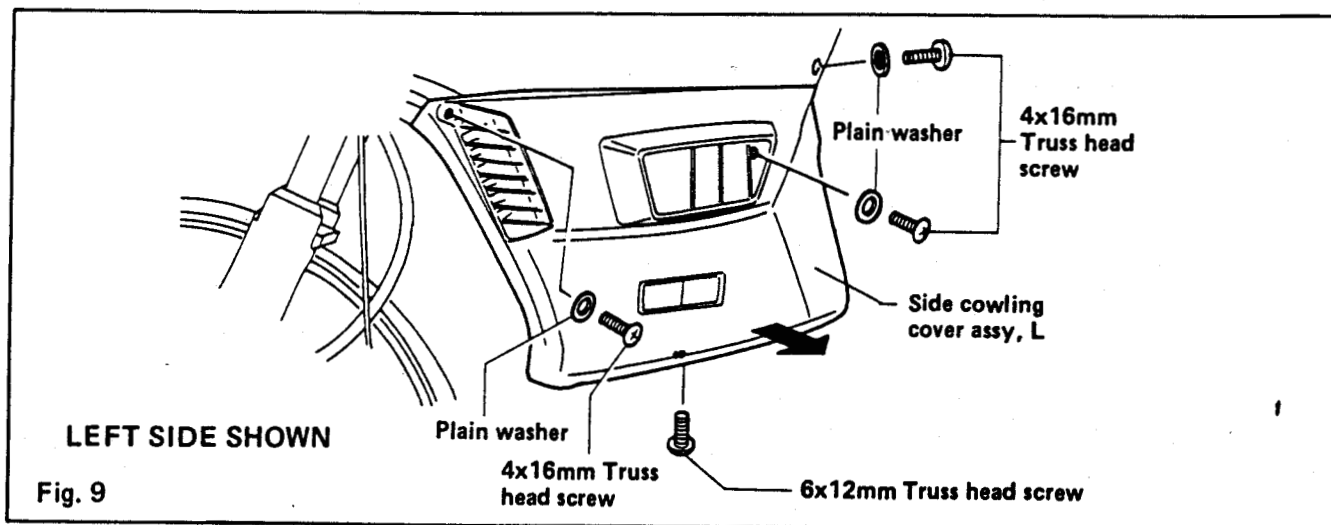


Fig. 8

MOUNTING PROCEDURES

9. 1) Remove the left side cowling cover ass'y by removing the 4 screws as shown in Fig. 9.

2) Remove the right cowling cover assembly following the same procedure.



10. Removing the right and left body cowling components.

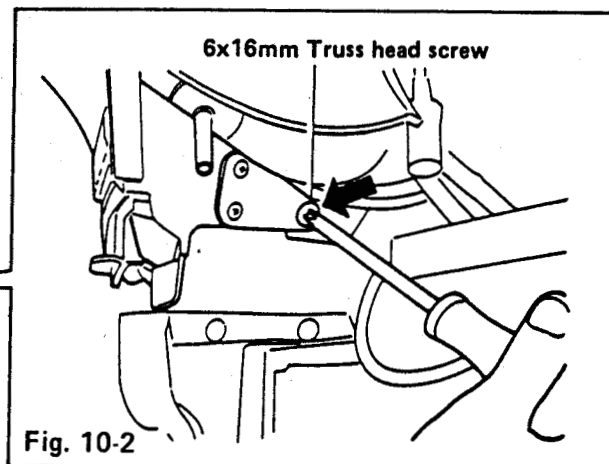
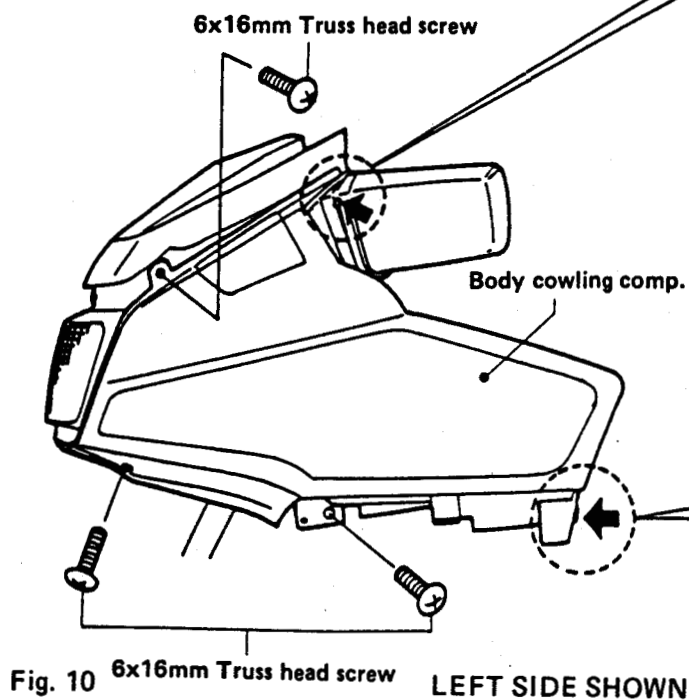
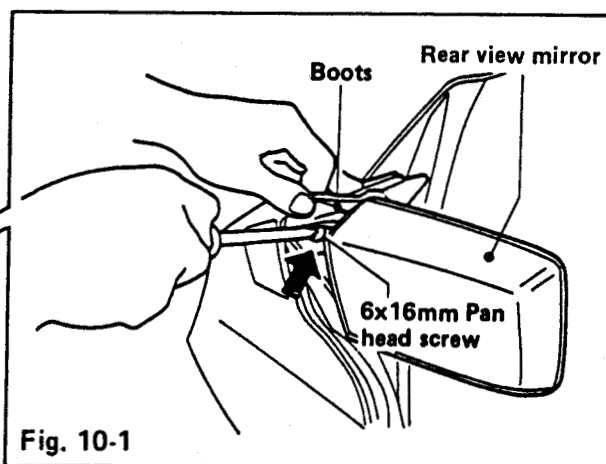
1) As shown in Fig. 10-1, turn the rearview mirror in the direction of the arrow (inward) and remove the upper screw at the inside of the boots.

Remove the screw on the other side following the same procedure.

2) In Fig. 10-2, remove the screw shown by the arrow. Repeat this procedure on the other side.

3) Remove the remaining 3 screws on each side.

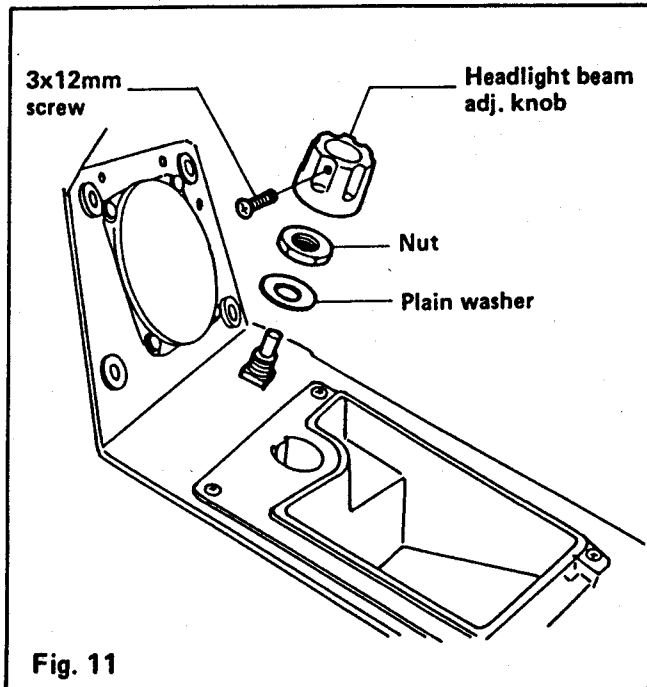
4) Disconnect the turn signal lamp couplers to remove the body cowling component.



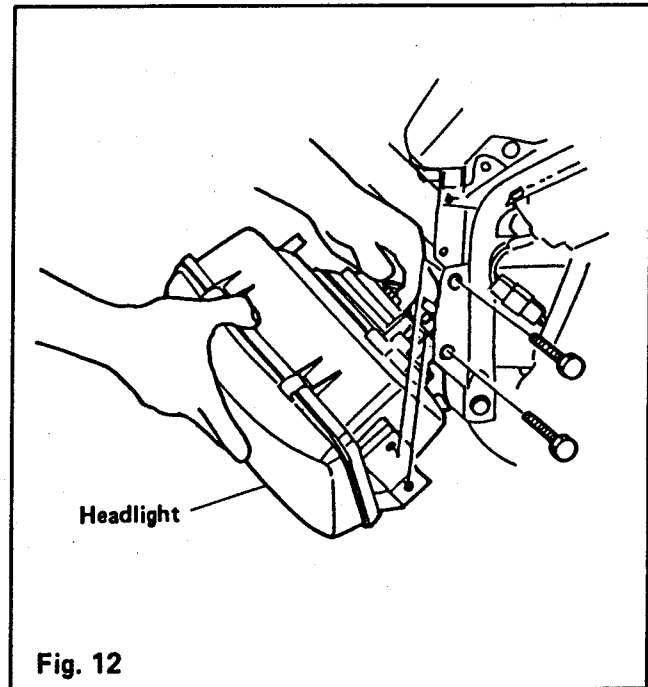
MOUNTING PROCEDURES

11. Removing the headlight assembly

- 1) Remove the headlight beam adjuster knob by loosening the 3x12mm screw.
- 2) Remove the nut used to secure the adjuster to the fairing panel.



- 3) Remove the headlight by removing the 2 bolts on each side.
- 4) Disconnect the bulb connector. Remove the headlight ass'y.



12. Removing the engine case guard

Remove the stock engine case guard by removing the four mounting bolts.

MOUNTING PROCEDURES

13. Exchanging the radiator hose

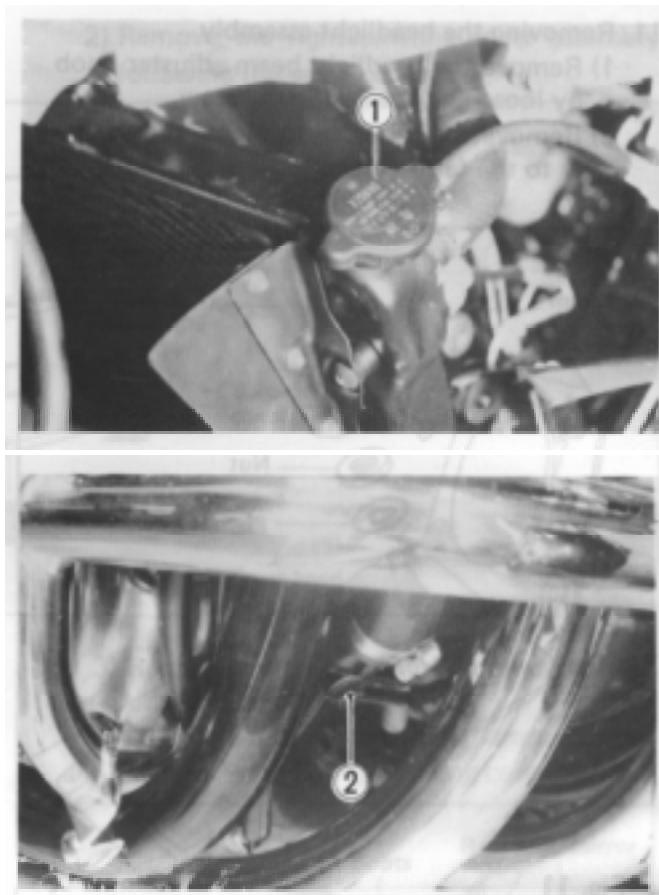
- 1) Remove the radiator cap ①, the drain plug ②, and drain the coolant into a clean container.

WARNING:

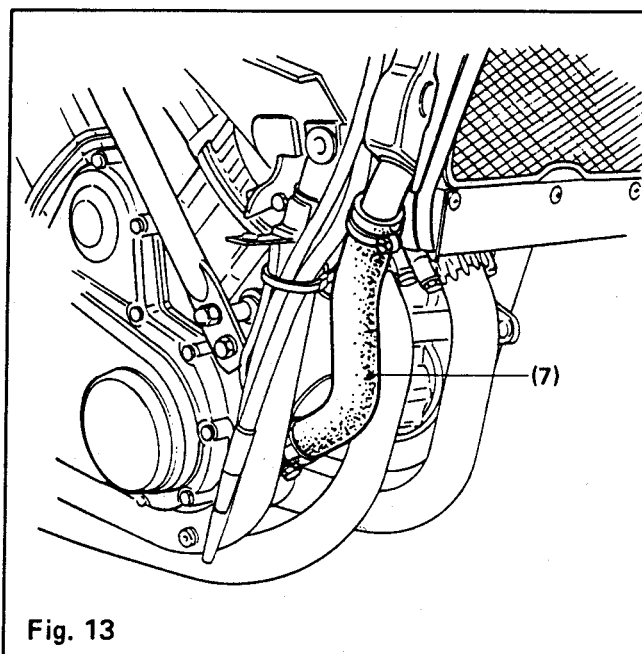
Do not open the radiator cap when the engine is hot, as you may be injured by escaping hot liquid or vapor.

WARNING:

Keep coolant away from children or pets and dispose of it properly. Coolant may be harmful if swallowed or if it comes in contact with skin or eyes. If coolant gets into the eyes or in contact with the skin, it should be flushed thoroughly with plenty of water. If swallowed, induce vomiting and call physician immediately!



- 2) Exchange the stock radiator hose for the attached radiator hose (7). Position the new hose as shown in Fig. 13 and fasten it with the two clamps.



MOUNTING PROCEDURES

- 3) Tighten the drain plug securely and pour the specified coolant up to the radiator inlet hole.

If the coolant drained previously is uncontaminated, it can be reused.

For coolant information, refer to your owner's manual.

4)

- Close the radiator cap securely.
- Fill the reservoir tank to the "HIGH" level with coolant.
- After completing the installation of the cornering lamps, start the engine, warm it up, cool it down, and then check the coolant level of the reservoir tank. Pour the coolant to the "HIGH" ③ level if the level is below "LOW" ④.

3 600 ml (3.80/3.17 US/Imp qt) including reservoir tank
--

600 ml (0.63/0.53 US/Imp qt) reservoir tank

99000-24120	SUZUKI Golden cruiser 1 200
-------------	--------------------------------

- Add 2 packs of anti-leakage material (Bar's leaks) in the coolant, when old coolant is replaced with fresh coolant.

99000-24240	Bar's leak
-------------	------------



MOUNTING PROCEDURES

14. Exchanging the ignition switch assembly

- 1) Disconnect the lead wire of the ignition switch assembly from the main wire harness, and remove the stock ignition switch assembly by removing the two allen bolts.
- 2) Install the new ignition switch assembly (6) and connect the lead wire with the main wire harness.

NOTE:

The Red/Pink single lead wire is connected with the cornering lamp wiring harness later on.

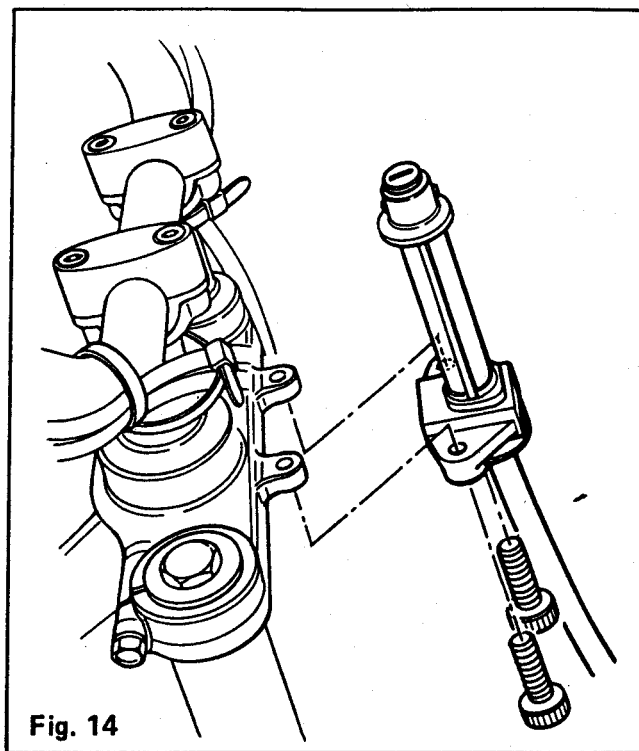


Fig. 14

15. Installing the cornering lamp relays

- 1) Remove the screws and washers securing the OK monitor control unit, and secure the relay bracket (5) with the OK monitor

control unit using the removed screws and washers.

- 2) Attach the three relays (4) to the relay bracket.

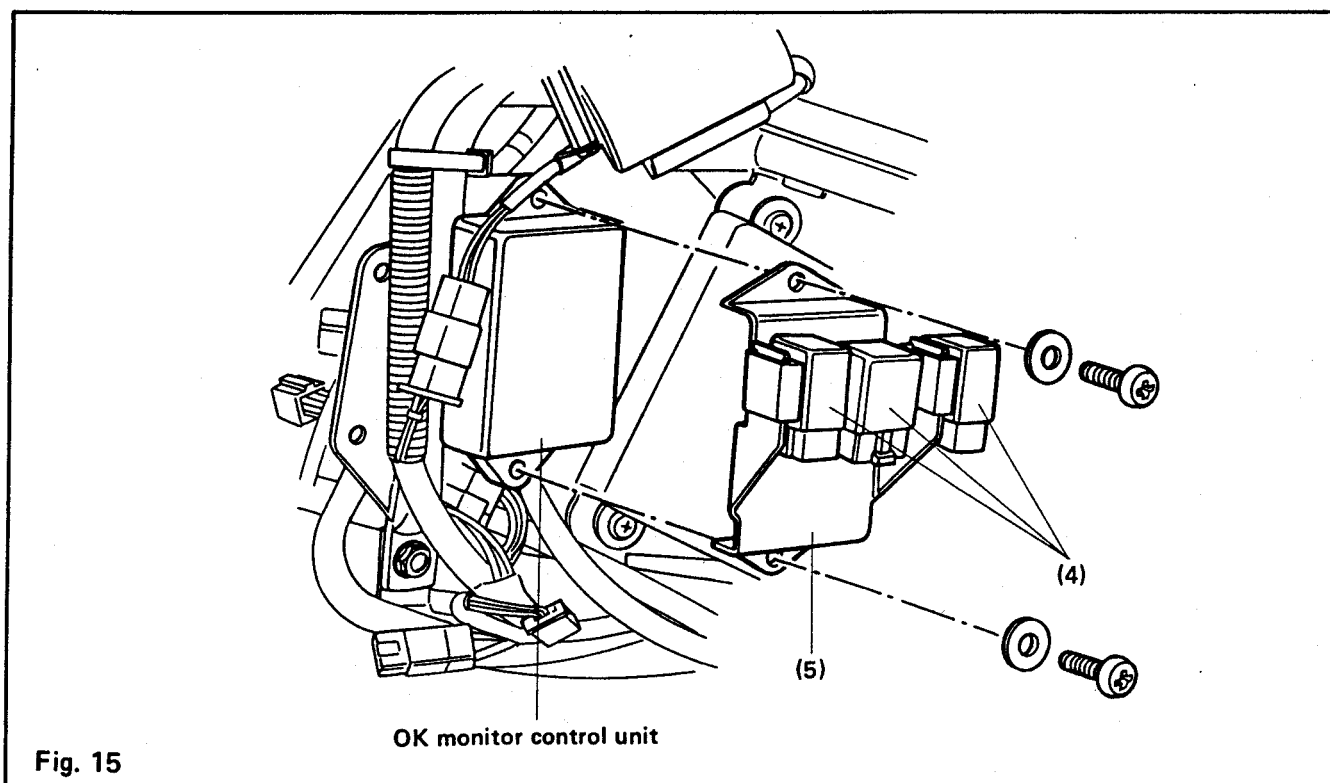


Fig. 15

MOUNTING PROCEDURES

16. Assembling the cornering lamps, lamp covers and engine case guard

- 1) Attach the left cornering lamp assembly (2) to the left lower cornering lamp cover (9) using the screws (16), the spacers (17) and the cushions (18) as shown in Fig. 16.

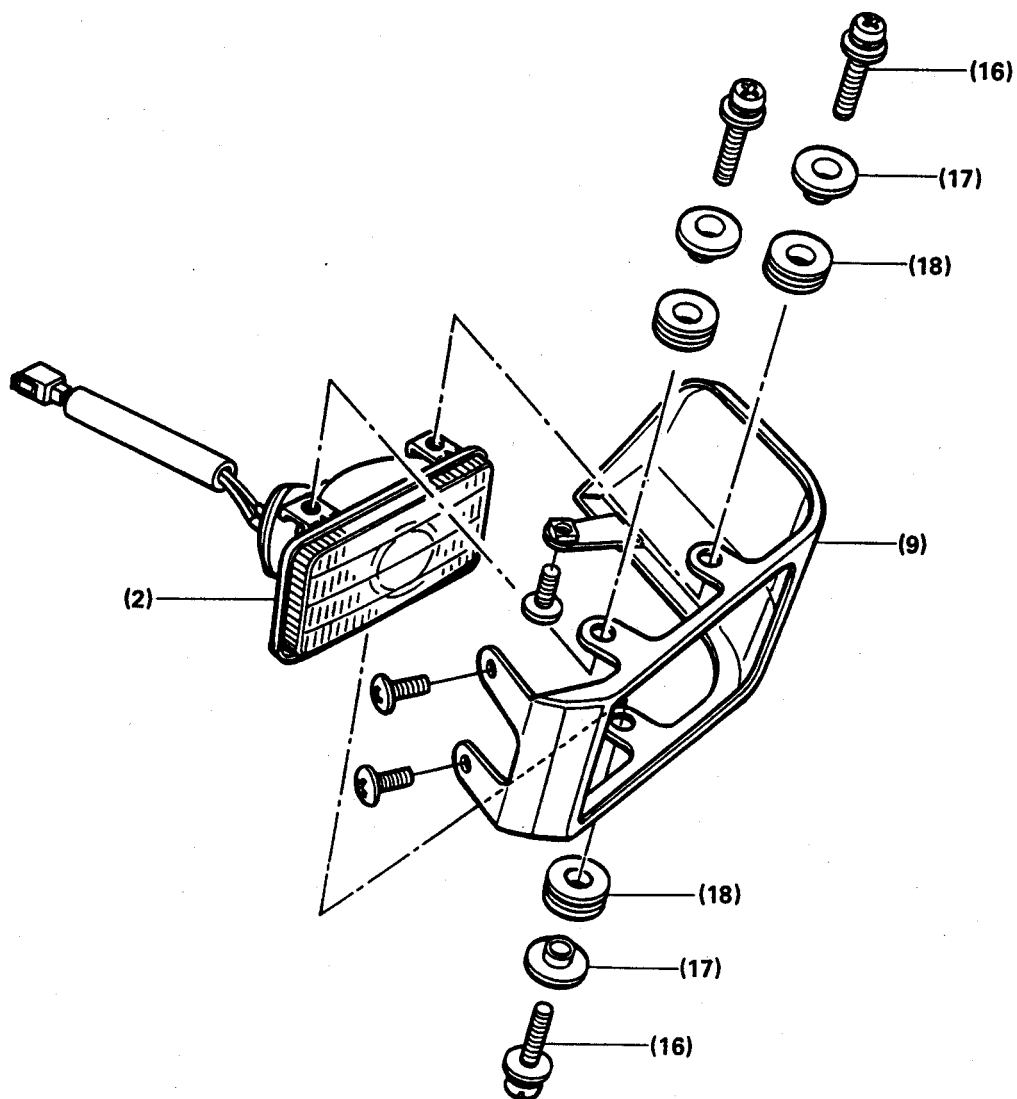


Fig. 16

MOUNTING PROCEDURES

NOTE:

Refer to Fig. 17 for the following instructions.

- 2) Stick the cushion (14) to the left center lamp cover (11).
- 3) Fit the left center lamp cover (11) to the left upper lamp cover (13), and tighten them using the screw (22).
- 4) Attach the left center lamp cover (11) and the left upper lamp cover (13) to the engine case guard by securing the following four positions.

Upper two positions

Use the screws (24), cushions

(26), (27), spacers (25), washers (28), and nuts (29).

Lower two positions

Use the screws (24), cushions (30), spacers (31), washers (32), clamps (33), and nuts (29).

- 5) Attach the left cornering lamp (2)/lower lamp cover (9) assembly to the engine case guard using the screws (23).
- 6) Attach the right cornering lamp and lamp covers to the engine case guard in the same way as the left ones.
- 7) Attach the caps (15) to the engine case guard.

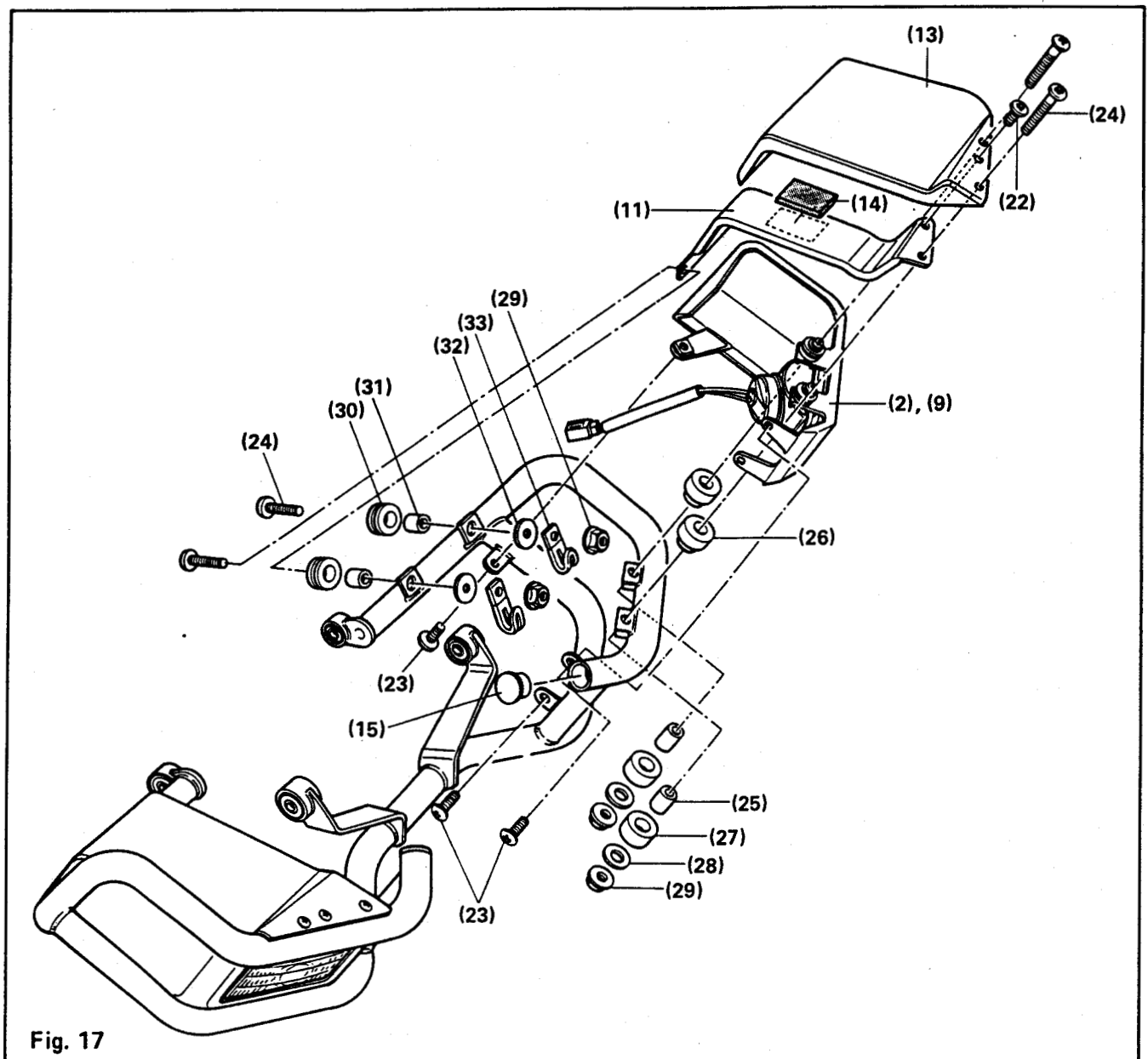


Fig. 17

17. Install the engine case guard/cornering lamp assembly using the bolts (19), bolts (20) and washers (21).

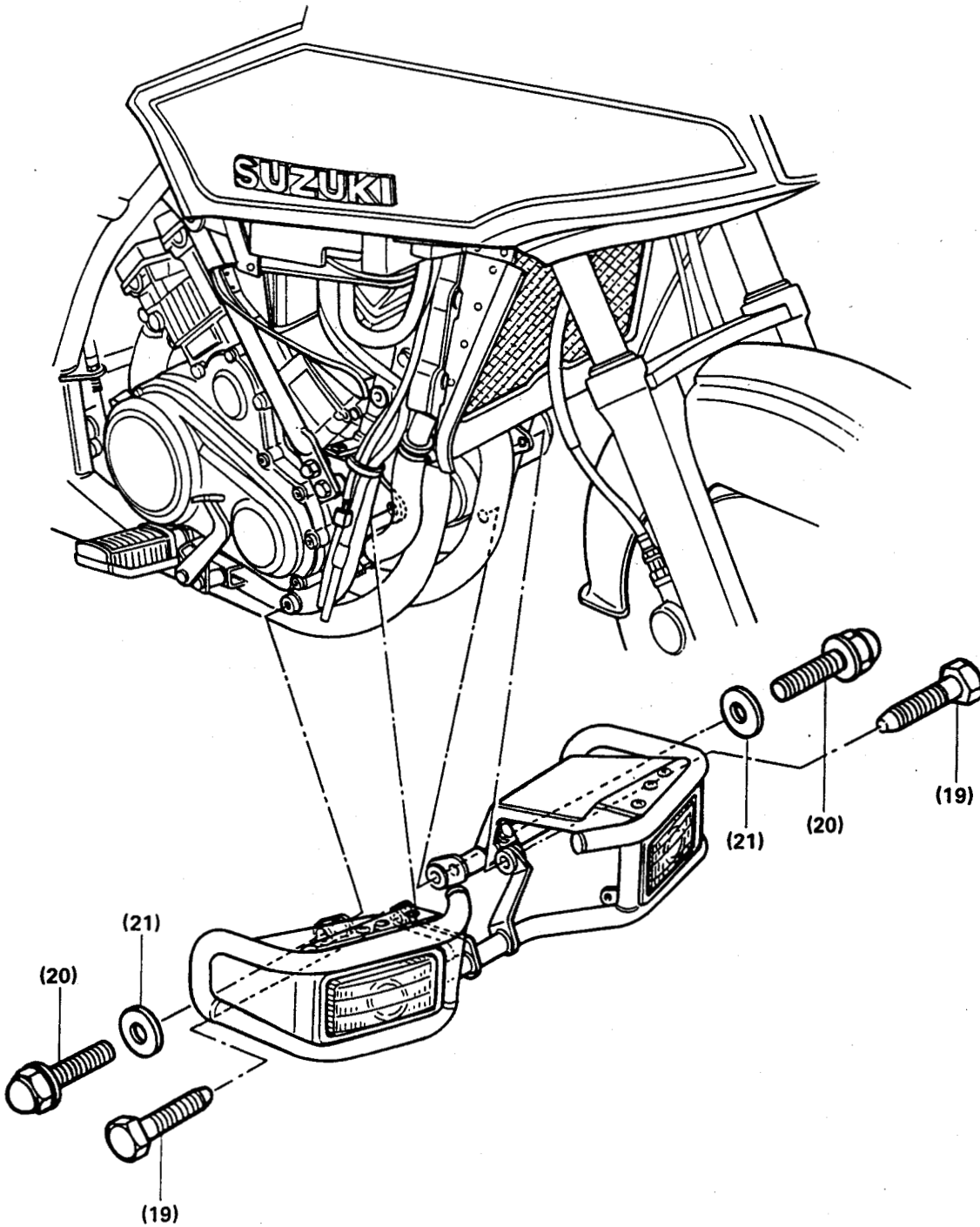
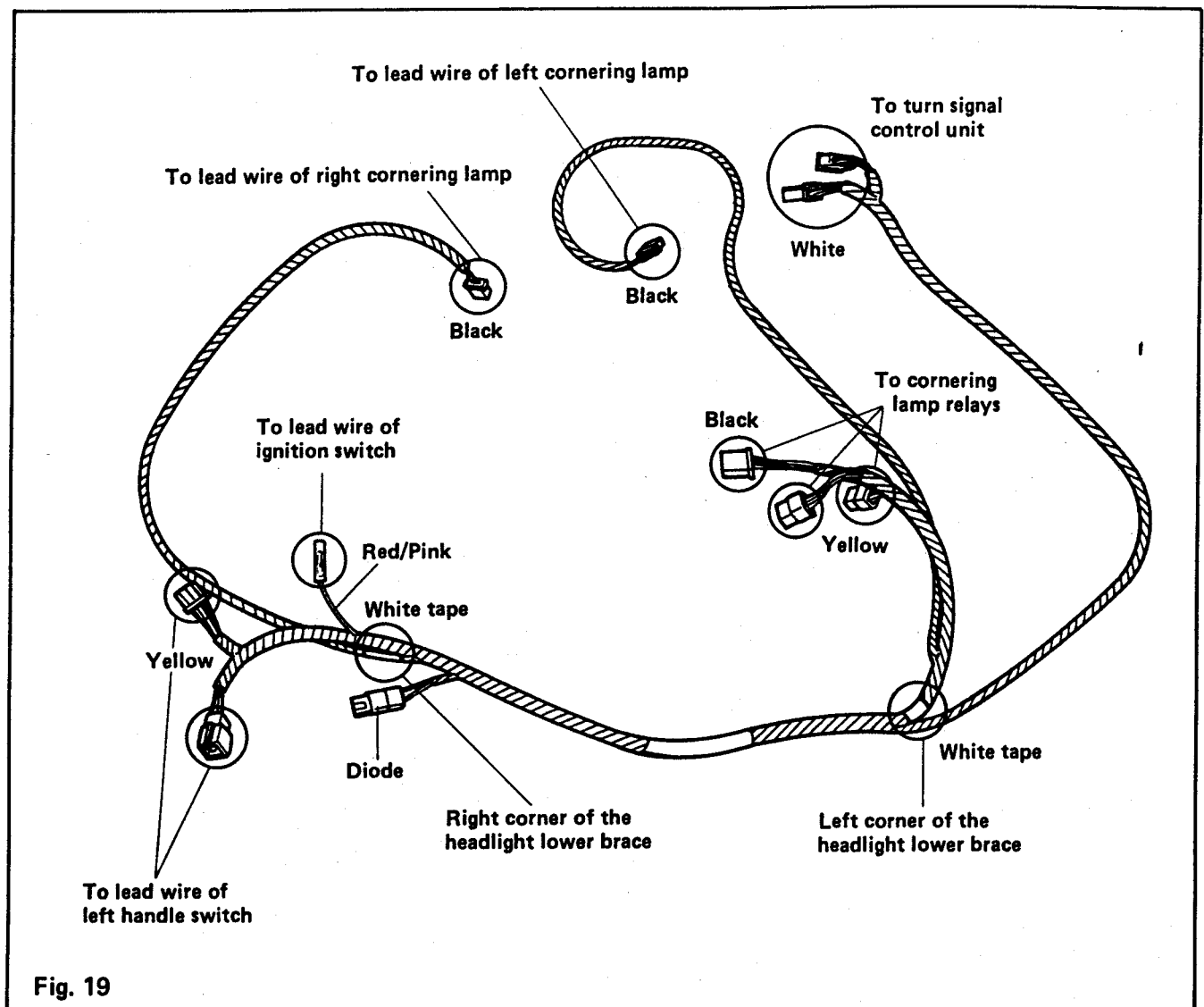


Fig. 18

MOUNTING PROCEDURES

18. Installing the wiring harness



- 1) Fit the two parts of the wiring harness marked by the white tape to the corners of the headlight lower brace and clamp the wiring harness as shown in Fig. 20-4. Connect the red/pink lead wire to the ignition switch lead wire (Red/Pink).
- 2) On the right side of the headlight brace, connect the yellow coupler to the coupler of the left handle switch lead wire as shown in Fig. 20-2. Connect the two remaining couplers to each other.
- 3) Route the lead wire for the right corner-

ing lamp, and connect the black coupler to the cornering lamp lead wire as shown in Fig. 20-3.

Clamp the lead wire as shown in Fig. 20-3.

- 4) On the left side of the headlight brace, route the lead wire for the turn signal control unit and connect the white coupler to the turn signal control unit as shown in Fig. 20-1.
- 5) Connect the cornering lamp relays as shown in Fig. 20-1.
- 6) Route and connect the left cornering lamp lead wire as shown in Fig. 20-5.

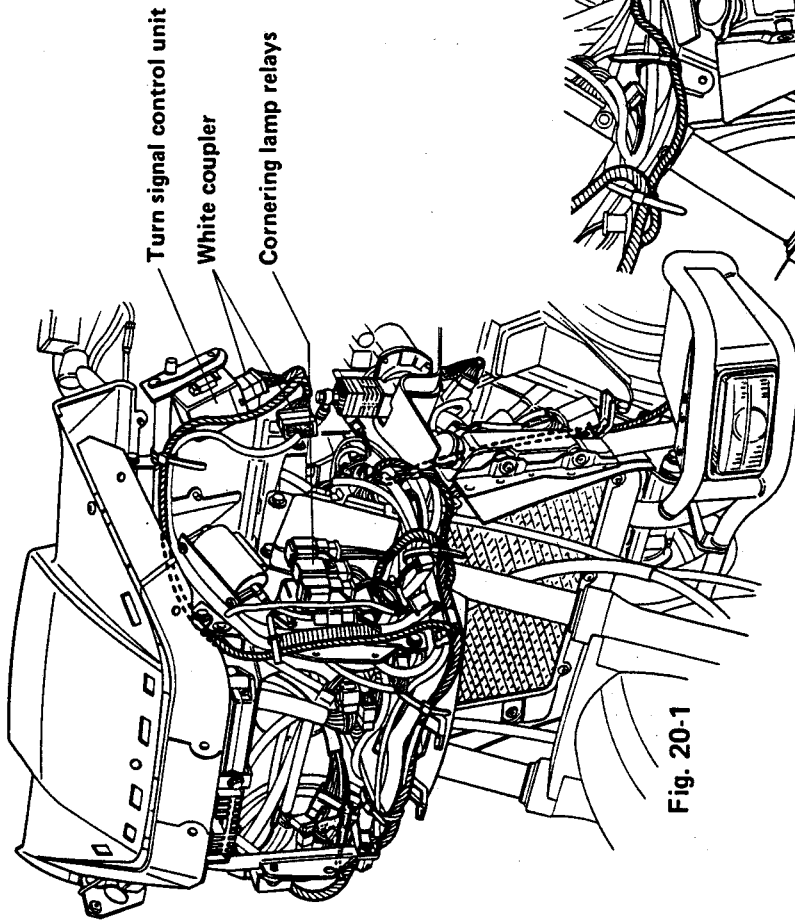


Fig. 20-1

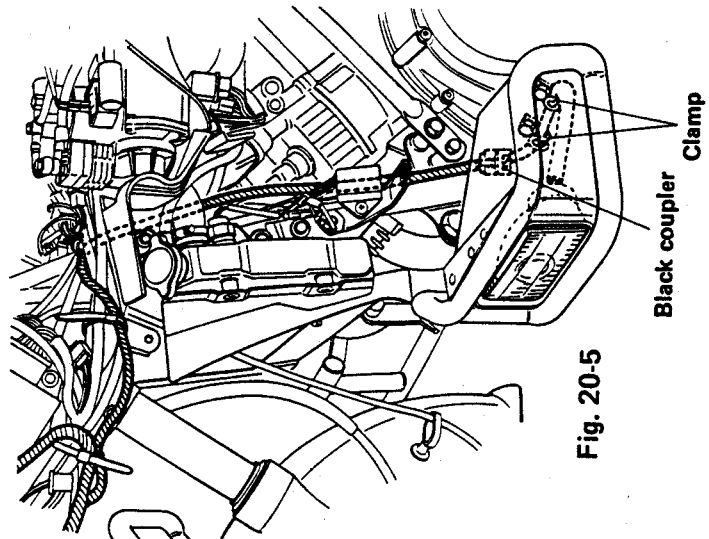


Fig. 20-5

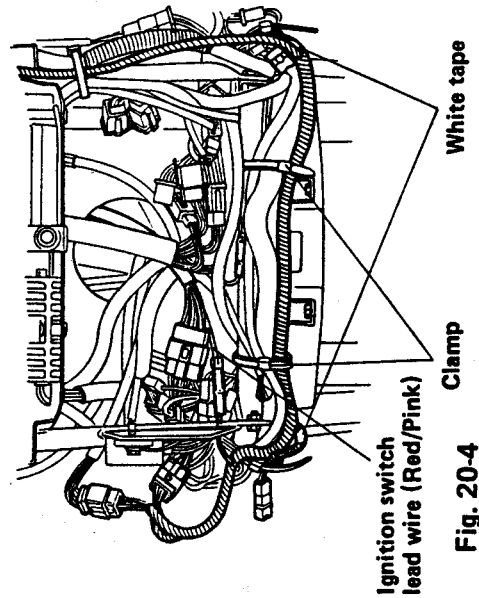


Fig. 20-4

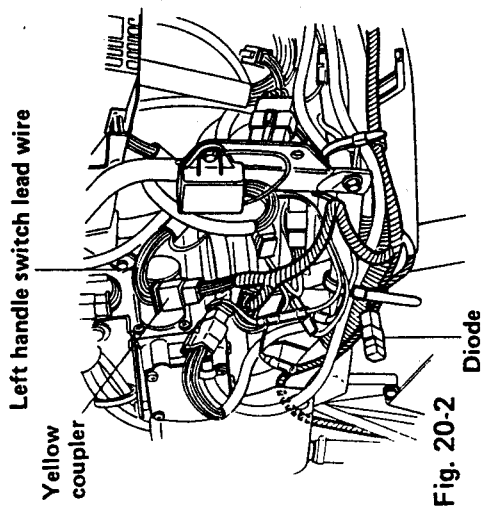


Fig. 20-2

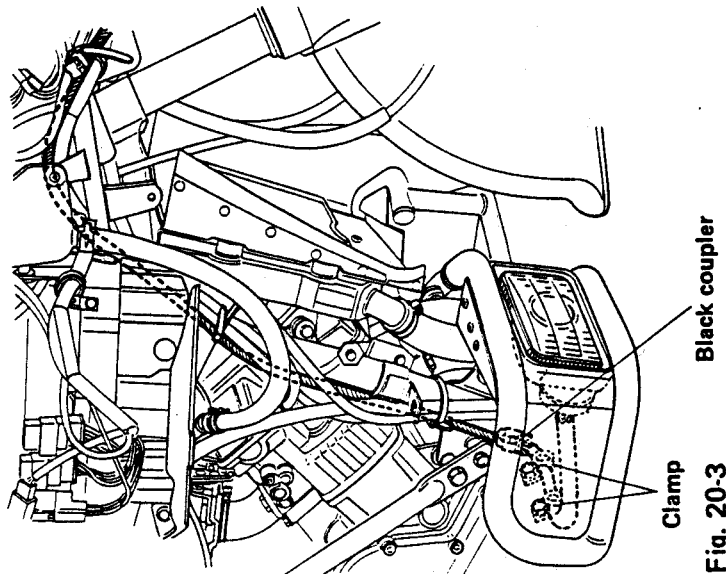


Fig. 20-3

MOUNTING PROCEDURES

19. Install the parts removed at items 1. ~ 11. in the reverse order from when you removed them.
20. After installing all the parts securely, check that the cornering lamps work properly as follows:
 - 1) With the key in the "ON" position and the hazard warning lights on, both cornering lamps should be lit continuously.
 - 2) With the key in the "ON" position and either turn signal on, the corresponding cornering lamp should be lit continuously.

NOTE:

After installation of this cornering lamp set, the hazard warning lights can be operated with the ignition switch in the "ON", "ACC", or "P" position.

21. Be sure that you check the headlight, turn signal lamps, hazard warning lights and other electrical accessories for proper operation.

WARNING:

Always perform the checks outlined above in steps 20 and 21 before each use of your motorcycle.